

High-Impact Tutoring Community of Practice

Please rename yourself to include your organization and/or district.

Icebreaker: What is your favorite Winter activity?

December 13, 2023

Agenda

I. Welcome + Framing (15 min)

- o ExpandED/NYCPS Introductions
- o Community Agreements
- o Initiative Updates

II. Guest Speaker - Meghan Duffy (20 min)

- o Senior Director of Academic Intervention Services, NYCPS Literacy Collaborative
- o Overview of MTSS in NYCPS

III. Guest Speaker - Toni DeMello (20 min)

- o District Manager, Chicago Public Schools MTSS
- o Overview of Chicago Public Schools HIT model

IV. Breakout Room - NSSA MTSS Brief Deep Dive (30 min)

V. Closing (5 min)

- o Feedback survey

Introductions



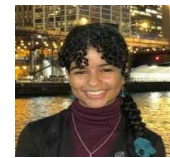
Saskia Trill, PhD
CEO & President



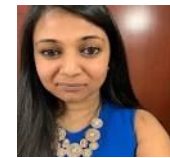
Marina Cofield
COO



**Melanie
Gardner-Ojefua**
VP, High-Impact
Tutoring



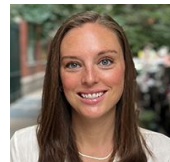
Ava Lehner
Program Director,
Policy & Sustainability



Jacquelyn Lekhraj
Director,
Implementation



Sameer Talati
Strategic Partnerships



Rebekah Nelson
Strategic Partnerships



Gregory Savitz
Strategic Partnerships

Community Agreements



Stay engaged



Expect and accept a lack of closure



Speak your Truth



Bring your identity



Bring a willingness to learn and unlearn

Adapted from Glenn E. Singleton & Curtis Linton, Courageous Conversations about Race: A Field Guide for Achieving Equity in Schools. 2006. pp.58-65. Thousand Oaks, CA: Corwin.

Initiative Updates



80

Schools



~4900

Students

- **Tutor Career Pathways Launched November**

- Pathways to Teacher Certification and Education Careers
- Professionalism 101
- Meet the Partners
- Career Coaching
- How to Apply to Grad School, Residencies, etc.
- Resume and Interview Prep
- Funding Your Future

Guest Speaker

Meghan Duffy

Senior Director of Academic Intervention Services, NYCPS
Literacy Collaborative

Guest Speaker

Toni DeMello

District Manager, Chicago Public Schools Equity Based MTSS

Breakout Room Activity

- **Individual Read Time (5-10 min)**
 - Read through the [NSSA - Integrating High-Impact Tutoring with Multi-tiered Systems of Support \(MTSS\)](#)
- **Breakout Room Discussion (10-15 min)**
 - Take notes in [Jamboard](#)
 - Reflect on the following guiding questions:
 1. How does the current NYCPS HIT model allow for MTSS Integration? What may need to be changed?
 2. How do you foresee a possible integration of HIT into MTSS affecting the implementation of HIT in schools?
 - a. What are the possible benefits/challenges that may arise?
 - b. What implementation issues are we currently facing that MTSS could help alleviate?
- **Whole Group Share-Out (5 min)**
 - Group spokesperson shares
 - Use post-it notes to make comments, ask questions, show resonance, etc.

Policy Working Group

- Meets monthly for one hour outside of the CoP
- Anyone can join with or without policy experience
 - We may ask group members to commit a moderate amount of work (i.e. research, proposal drafts etc.) outside of the monthly meeting
- Topics we've covered so far
 - Braiding federal funding sources to support HIT post-ESSER
- **Next Policy Working Group meeting: Wednesday, January 10th 12:00pm - 1:00pm**



Feedback Survey

- **Follow-Up Survey:**
 - Feedback [Survey](#)
- **Important Dates:**
 - Next Policy Working Group: Wednesday, January 10th 12:00pm - 1:00pm
 - Next Community of Practice: Wednesday, February 14th 9:30am-11:00am





ExpandEDSchools

11 West 42nd Street, 3rd Floor
New York, NY 10036
646.943.8700
info@expandedschools.org

[ExpandEDSchools.org](https://www.expandedschools.org)
