

# High-Impact Tutoring Community of Practice

---

**Please rename yourself to include your organization and/or district.**

**Icebreaker: Pick your favorite decade and tell us why.**

*February 14th, 2024*



# Agenda

- I. **Welcome + Framing (10 min)**
  - o ExpandedED/NYCPS Introductions
  - o Community Agreements
- II. **Initiative Updates (10 min)**
- III. **Mid-Year Reflection (10 min)**
- IV. **Guest Speaker - Christy Borders (25 min)**
  - o Executive Director Illinois Tutoring Initiative
  - o Overview of the Illinois Tutoring Initiative + Q&A
- V. **Breakout Room Discussion (30 min)**
- VI. **Closing (5 min)**
  - o Feedback survey

# Introductions



**Saskia Trill, PhD**  
CEO & President



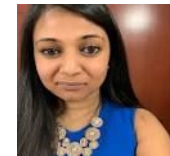
**Rashida  
Ladner-Seward**  
Chief Program  
Officer



**Melanie  
Gardner-Ojefua**  
VP, High-Impact  
Tutoring



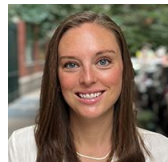
**Ava Lehner**  
Program Director,  
Policy & Sustainability



**Jacquelyn Lekhraj**  
Director,  
Implementation



**Sameer Talati**  
Strategic Partnerships



**Rebekah Nelson**  
Strategic Partnerships



**Gregory Savitz**  
Strategic Partnerships

# Community Agreements



Stay engaged



Expect and accept a lack of closure



Speak your Truth



Bring your identity



Bring a willingness to learn and unlearn

*Adapted from Glenn E. Singleton & Curtis Linton, Courageous Conversations about Race: A Field Guide for Achieving Equity in Schools. 2006. pp.58-65. Thousand Oaks, CA: Corwin.*

# Initiative Updates (Implementation)



80

Schools



~4500

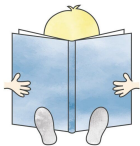
Students

Amplify.

braintrust



CU Reading  
NY Corps



enriched  
LITERACY EDUCATION



Follow Us To Success  
An Education & Training Company

INTERVENE K-12

LITERACY TRUST

PRACTICE  
BENEFIT CORP

TINY

SmartStart  
EDUCATION™

READ  
READ ALLIANCE

WILSON  
LANGUAGE TRAINING®

# Initiative Updates (Educator Careers)

- **Professional Development Series**

- February 16th: *Funding Your Future*
- March 8th: *Acing the Demo Lesson & Interviewing*
- March 11th: *Pathways to Teacher Certification & Education Careers*
- March 15th: *Educator Careers Networking Event*

- **Working Group**

- Exploration of case studies of tutors
- Landscape Analysis
- Landscape Dissemination
  - General Educator Pathways for 6 - 14
  - Tutor-to-Teacher Pipeline

Contact Dana Wheeler at [dwheeler@expandedschools.org](mailto:dwheeler@expandedschools.org) if interested in joining!

# Mid-Year Review

## Main conclusions from our previous meetings this year:

### 1. Outcomes-Based Contracting

- Outcomes-based contracting (OBC) requires that a significant portion of contractor payment be contingent upon student growth and outcomes.

### 2. Multi-tiered Systems of Support

- MTSS is a framework used by schools and systems to differentiate educational experiences for students in order to support learning and social, emotional, and behavioral development.

### 3. Federal Work Study Partnerships

- FWS funds part-time employment for undergraduate and graduate students with financial need.

# Guest Speaker

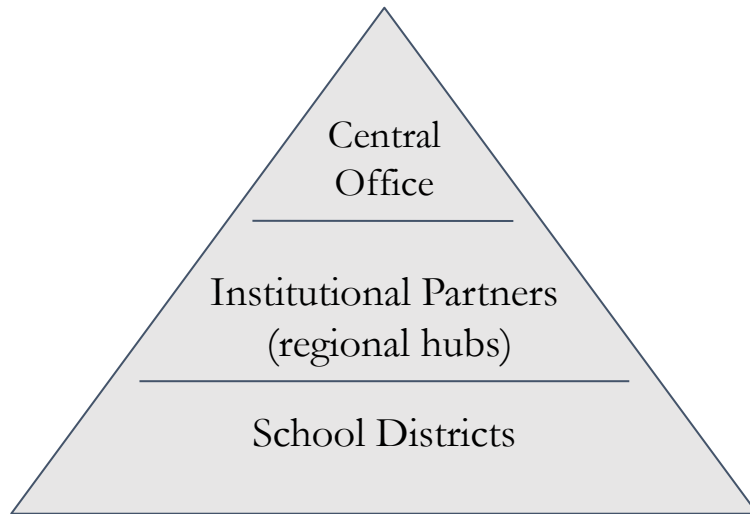
## Christy Borders

Executive Director Illinois Tutoring Initiative



# Breakout Room Activity

## Illinois Tutoring Initiative

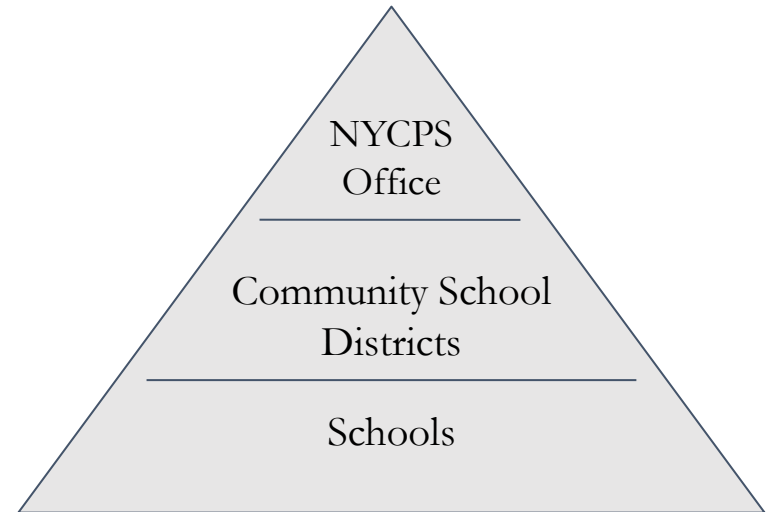


**Central Office:** coordinates and oversees all 7 institutional partners

**Institutional Partners:** supervise and support the school districts and tutors within their region (through a state university)

**School districts:** host and administer tutoring at their schools

## New York City Public Schools



**NYCPS Office:** Oversees all community school districts

**Community School Districts:** 32 across all 5 boroughs, each overseen by a superintendent

**Schools:** Overseen by a principal

# Breakout Room Activity

- **Breakout Room Discussion**
  - Reflect on how we could incorporate the Illinois Tutoring Initiatives' regional hub organization into our own model.
  - Guiding questions:
    - What would it look like to have community school districts to act as regional hubs within the NYCPS HIT model?
    - What responsibilities would community school districts take on as “regional HIT hubs”?
    - What would this mean for tutoring providers?
  - Use the [Jamboard](#) to take notes and guide your discussion.
- **Whole Group Share-Out**
  - Group spokesperson shares
  - Use post-it notes to make comments, ask questions, show resonance, etc.

# Feedback Survey

- **Follow-Up Survey:**
  - Feedback [Survey](#)
- **Important Dates:**
  - Next Policy Working Group: Wednesday, March 6th 12:00pm - 1:00pm
  - Next Community of Practice: Wednesday, April 17th 9:30am-11:00am





# ExpandEDSchools

11 West 42nd Street, 3rd Floor  
New York, NY 10036  
646.943.8700  
info@expandedschools.org

[ExpandEDSchools.org](https://www.expandedschools.org)

---